

**TITLE**

ELECTRICAL POWER - ENHANCED CLEARANCE FOR PEDESTAL WIRE HARNESSSES

**EFFECTIVITY**

<b>MODEL</b>	<b>SERIAL NUMBERS</b>
King Air 90 (applicable variants within defined LJ serial range)	LJ-1 thru LJ-2146
King Air E90	LW-1 thru LW-347
King Air F90	LA-2 thru LA-236
Super King Air B200GT	BY-1 thru BY-312
Super King Air B200CGT	BZ-1
Super King Air B300C	FM-1 thru FM-75, FN-1
Super King Air B300	FL-1 thru FL-1030
Super King Air 300	FA-1 thru FA-230, FF-1 thru FF-19
King Air 100 and A100	B-1 thru B-94, B-100 thru B-204, B-206 thru B-247
Super King Air 200/B200	BB-2, BB-6 thru BB-185, BB-187 thru BB-202, BB-204 thru BB-269, BB-271 thru BB-407, BB-409 thru BB-468, BB-470 thru BB-488, BB-490 thru BB-509, BB-511 thru BB-529, BB-531 thru BB-550, BB-552 thru BB-562, BB-564 thru BB-572, BB-574 thru BB-590, BB-592 thru BB-608, BB-610 thru BB-626, BB-628 thru BB-646, BB-648 thru BB-664, BB-666 thru BB-694, BB-696 thru BB-797, BB-799 thru BB-822, BB-824 thru BB-870, BB-872 thru BB-894, BB-896 thru BB-990, BB-992 thru BB-1051, BB-1053 thru BB-1092, BB-1094, BB-1095, BB-1099 thru BB-1104, BB-1106 thru BB-1116, BB-1118 thru BB-1184, BB-1186 thru BB-1263, BB-1265 thru BB-1288, BB-1290 thru BB-1300, BB-1302 thru BB-1384, BB-1389 thru BB-1425, BB-1427 thru BB-1447, BB-1449, BB-1450, BB-1452, BB-1453, BB-1455, BB-1456, BB-1458 thru BB-1683, BB-1685 thru BB-1716, BB-1718 thru BB-1720, BB-1722, BB-1723, BB-1725, BB-1726, BB-1728 thru BB-2021
Super King Air 200C/B200C	BL-1 thru BL-23, BL-25 thru BL-57, BL-61 thru BL-72, BL-124 thru BL-170
Super King Air 200CT/B200CT	BN-1 thru BN-4

December 6, 2018

MTB-24-01  
Page 1 of 8

Textron Aviation Customer Service, P.O. Box 7706, Wichita, KS 67277, U.S.A. 1-316-517-5800

This document contains technical data and is subject to U.S. export regulations. This information has been exported from the United States in accordance with export administration regulations. Diversion contrary to U.S. law is prohibited. ECCN: 9E991

Super King Air 200T/B200T	BT-1 thru BT-38
1900 Airliner	UA-3
1900C Airliner	UB-1 thru UB-74, UC-1 thru UC-174
1900D Airliner	UE-1 thru UE-439
99 Airliner	U-1 thru U-239
B100	BE-1 thru BE-137
A100 (U-21F)	B-95 thru B-99
A100-1 (U-21J)	BB-3 thru BB-5
A200 (C-12A/C-12C)	BC-1 thru BC-75, BD-1 thru BD-30
A200C (UC-12B)	BJ-1 thru BJ-66
A200CT (C-12D, FWC-12D, C-12F)	BP-1, BP-7 thru BP-11, BP-19, BP-22, BP-24 thru BP-71
A200CT (RC-12D, RC-12H)	GR-1 thru GR-12, GR-14 thru GR-19
A200CT (RC-12G)	FC-1 thru FC-3
A200CT (RC-12K, RC-12P, RC-12Q)	FE-1 thru FE-9, FE-25 thru FE-36
B200C (C-12F)	BP-64 thru BP-71; BL-73 thru BL-112, BL-118 thru BL-123
B200C (UC-12F)	BU-1 thru BU-12
B200C (UC-12M)	BV-1 thru BV-12
B200C (C-12R)	BW-1 thru BW-29
1900C (C-12J)	UD-1 thru UD-6

**REASON**

New anchors in the pedestal provide enhanced clearance for wire harnesses.

**DESCRIPTION**

This service document provides parts and instructions to enhance clearance for wire harnesses in the pedestal.

**COMPLIANCE**

OPTIONAL. This service document can be accomplished at the discretion of the owner.

A service document published by Textron Aviation may be recorded as *completed* in an aircraft log only when the following requirements are satisfied:

- 1) The mechanic must complete all of the instructions in the service document, including the intent therein.
- 2) The mechanic must correctly use and install all applicable parts supplied with the service document kit. Only with written authorization from Textron Aviation can substitute parts or rebuilt parts be used to replace new parts.
- 3) The mechanic or airplane owner must use the technical data in the service document only as approved and published.
- 4) The mechanic or airplane owner must apply the information in the service document only to aircraft serial numbers identified in the *Effectivity* section of the document.

- 5) The mechanic or airplane owner must use maintenance practices that are identified as acceptable standard practices in the aviation industry and governmental regulations.

No individual or corporate organization other than Textron Aviation is authorized to make or apply any changes to a Textron Aviation-issued service document or flight manual supplement without prior written consent from Textron Aviation.

Textron Aviation is not responsible for the quality of maintenance performed to comply with this document, unless the maintenance is accomplished at a Textron Aviation-owned Service Center.

#### APPROVAL

Textron Aviation received FAA approval for the technical data in this publication that changes the airplane type design.

#### FLIGHT CREW OPERATIONS

No Changes

#### CONSUMABLE MATERIAL

You must use the consumable materials that follow, or their equivalent, to complete this service document.

NAME	NUMBER	MANUFACTURER	USE
Rivet	MS20470AD4-3 A	Commercially available	To plug rivet holes

#### TOOLING

No specialized tooling is required for accomplishment of this service document.

#### WEIGHT AND BALANCE INFORMATION

Negligible

#### REFERENCES

Applicable King Air Maintenance Manual.

#### PUBLICATIONS AFFECTED

Applicable King Air Illustrated Parts Catalog.

#### ACCOMPLISHMENT INSTRUCTIONS

1. Prepare the airplane for maintenance.
  - A. Make sure that the airplane is electrically grounded.
  - B. Make sure that all switches are in the OFF/NORM position.
  - C. Disconnect electrical power from the airplane.
    - (1) Disconnect external electrical power.
    - (2) Disconnect the airplane battery.
  - D. Attach maintenance warning tags to the battery and external power receptacle that have **"DO NOT CONNECT ELECTRICAL POWER - MAINTENANCE IN PROGRESS"** written on them.
2. Remove panel from the left side of the pedestal.
3. (Refer to Figure 1, Sheets 1 thru 3.) Determine if chafing exists on the wire harness that is next to the left hand engine control rod (hereafter referred to as **control rod**).
  - A. If chafing exists, go to Step 4.
  - B. If chafing does not exist, no further action is necessary. Go to Step 10.

4. Remove seats on the left side of the passenger compartment. (Refer to King Air Maintenance Manual, Chapter 25, Passenger Compartment - Passenger Seat Removal/Installation.)
5. Remove the pilot and copilot seat. (Refer to King Air Maintenance Manual, Chapter 25, Flight Compartment - Pilot and Copilot Seat Removal/Installation.)
6. Repair or replace damaged wires as necessary. (Refer to King Air Maintenance Manual, Chapter 20, Standard Practices - Electrical Wiring.)
7. Blend and protect damaged areas as necessary on the control rod. (Refer to King Air Maintenance Manual, Chapter 20, Airplane Finish Care - Maintenance Practices.)

**NOTE:** If more than 10% material thickness has been removed from the control rod, replace the control rod.

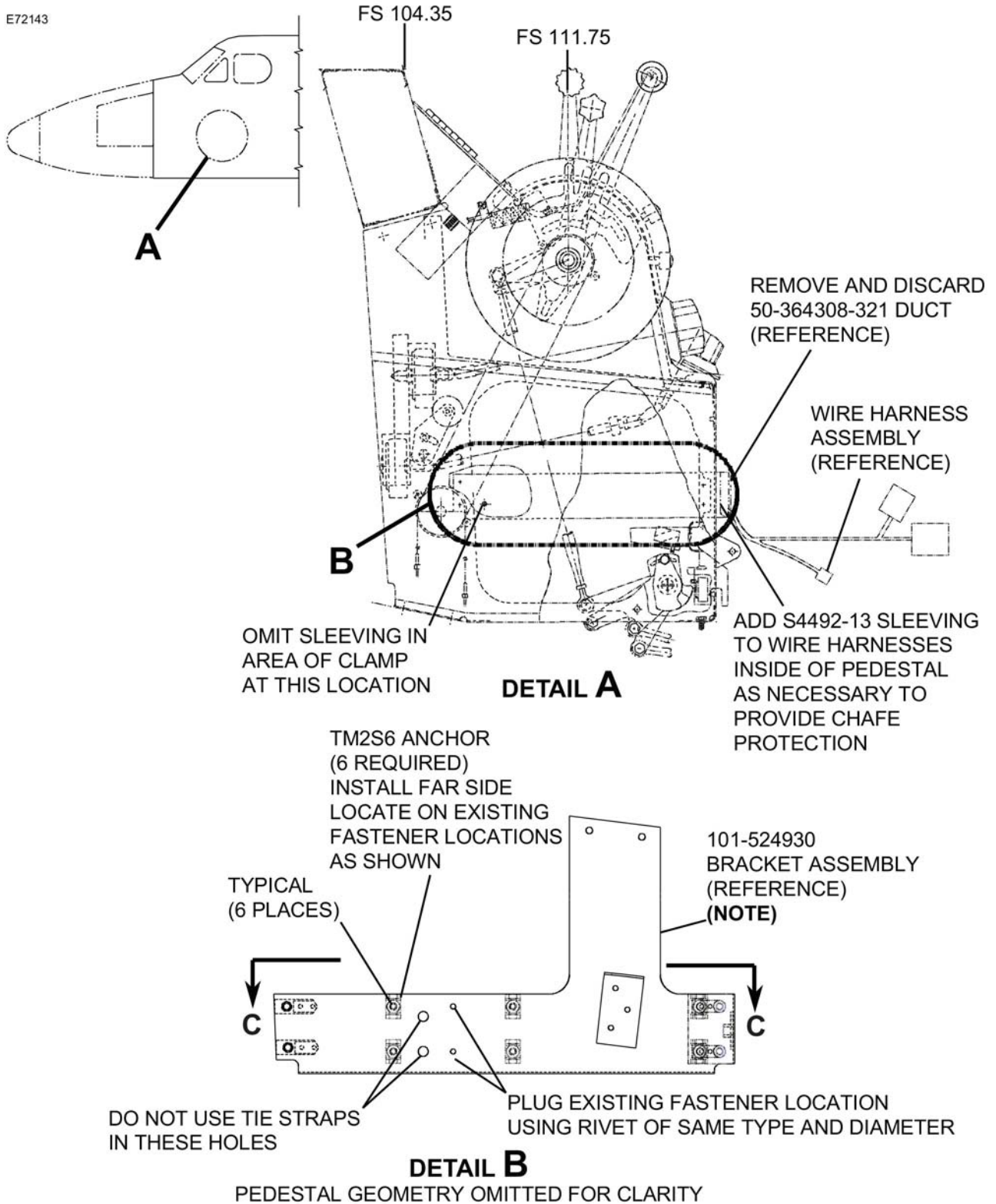
8. Remove and discard 50-364308-321 Fiberglass Duct. Do not remove existing bracket assembly.
9. (Refer to Figure 1, Sheets 1 thru 3.) Accomplish the following:
  - A. Use MS35206-226 Screws and MS21042L06 Nuts to install four TM2S6 Anchors at open rivet locations at side of pedestal.
  - B. Use MS35206-226 Screws and MS21042L06 Nuts to install two TM2S6 Anchors at open rivet locations along long aft flange.
  - C. Plug open rivet locations.
  - D. Separate wire harness assemblies along both rows of anchors.
  - E. Wrap S4492-13 Sleeve around rerouted wiring along length as shown. Sleeve should be omitted in area of the clamp at forward end of the pedestal.
  - F. Tie strap sleeved harness and attach to new anchors using S2209-5 Wire Ties.
  - G. Orient tie straps to maximize clearance with surrounding structure.
  - H. Make sure a minimum 0.25-inch clearance exists between harnesses and control rod.
  - I. Move pilot controls to verify that no contact exists between harnesses and control rod.

**CAUTION:** Do not maneuver power lever into ground fine or reverse with engine not running or control cable disconnected.

10. Reinstall panel on the left side of the pedestal.
11. Install the pilot and copilot seat. (Refer to King Air Maintenance Manual, Chapter 25, Flight Compartment - Pilot and Copilot Seat Removal/Installation.)
12. Install seats on the left side of the passenger compartment. (Refer to King Air Maintenance Manual, Chapter 25, Passenger Compartment - Passenger Seat Removal/Installation.)
13. Remove the maintenance warning tags and connect the airplane battery.
14. Make an entry in the airplane logbook that states compliance and method of compliance with this service document.

**NOTE:** Textron Aviation recommends that compliance with all service documents is reported to Camp Systems International.

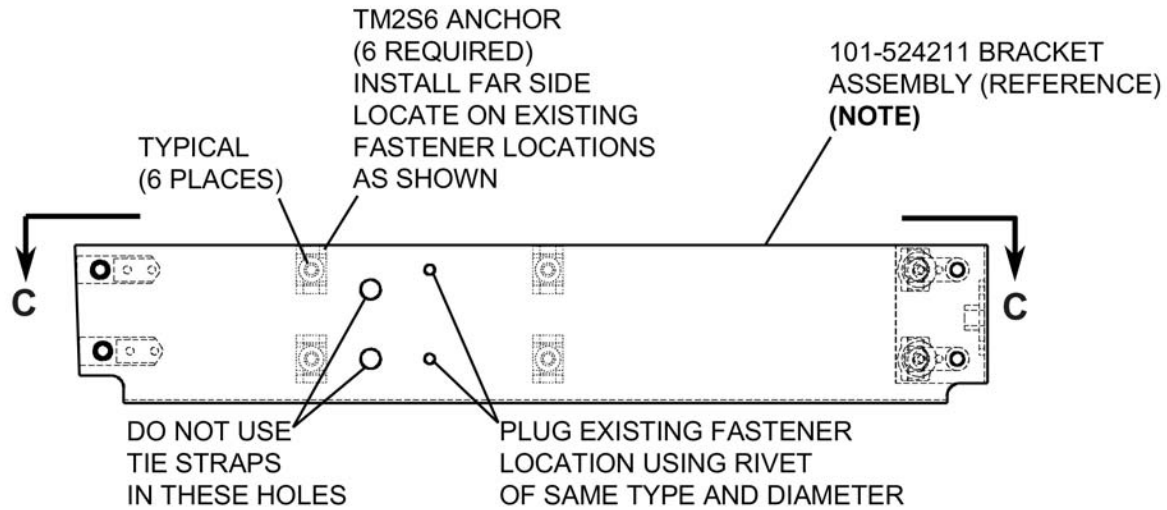
- Complete a record of compliance. (Maintenance Transaction Report, Log Book Entry, or other record of compliance.)
- Put a copy of the completed record of compliance in the airplane logbook.
- Send a copy of the completed record of compliance to: Camp Systems International Incorporated, 8201 East 34th Street North, Building 1100 Suite 1101 Wichita, KS 67226.



**NOTE:** THIS BRACKET ASSEMBLY APPLIES TO B200GT, B300, AND B300C AIRPLANES.

Figure 1. Pedestal Wiring Inspection / Modification (Sheet 1)

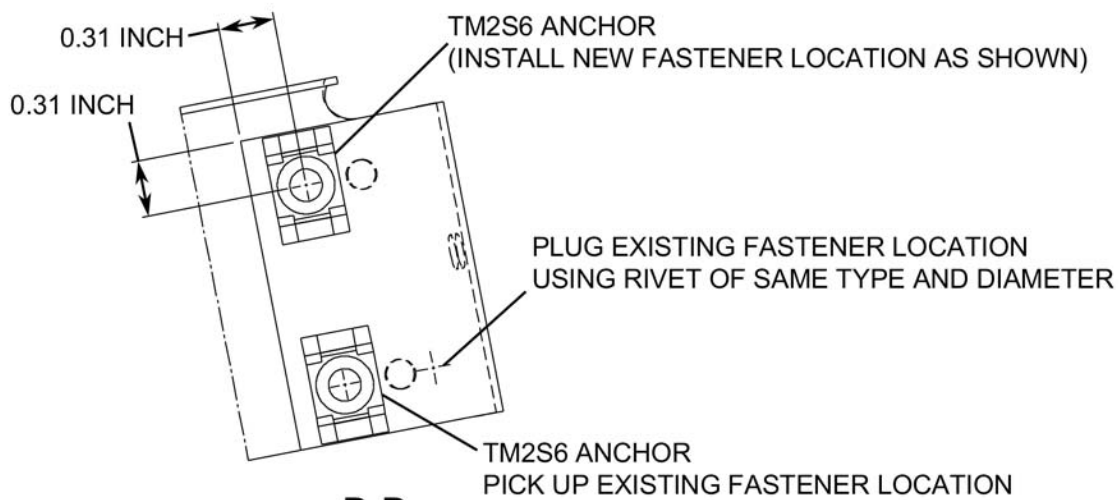
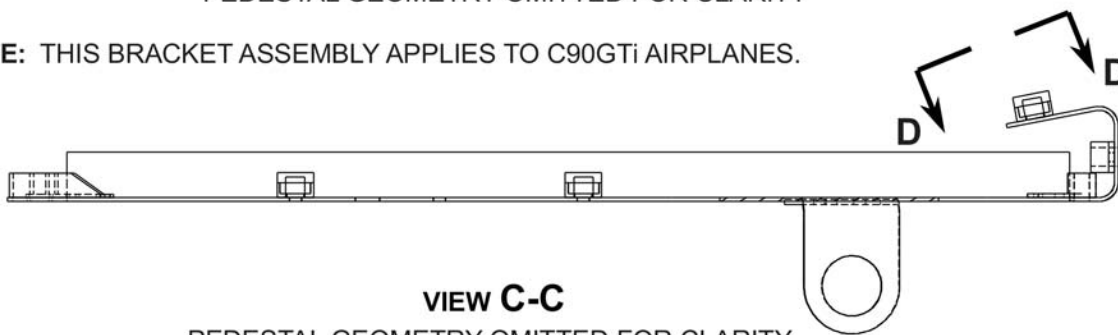
E72144



**DETAIL B**

PEDESTAL GEOMETRY OMITTED FOR CLARITY

NOTE: THIS BRACKET ASSEMBLY APPLIES TO C90GTi AIRPLANES.

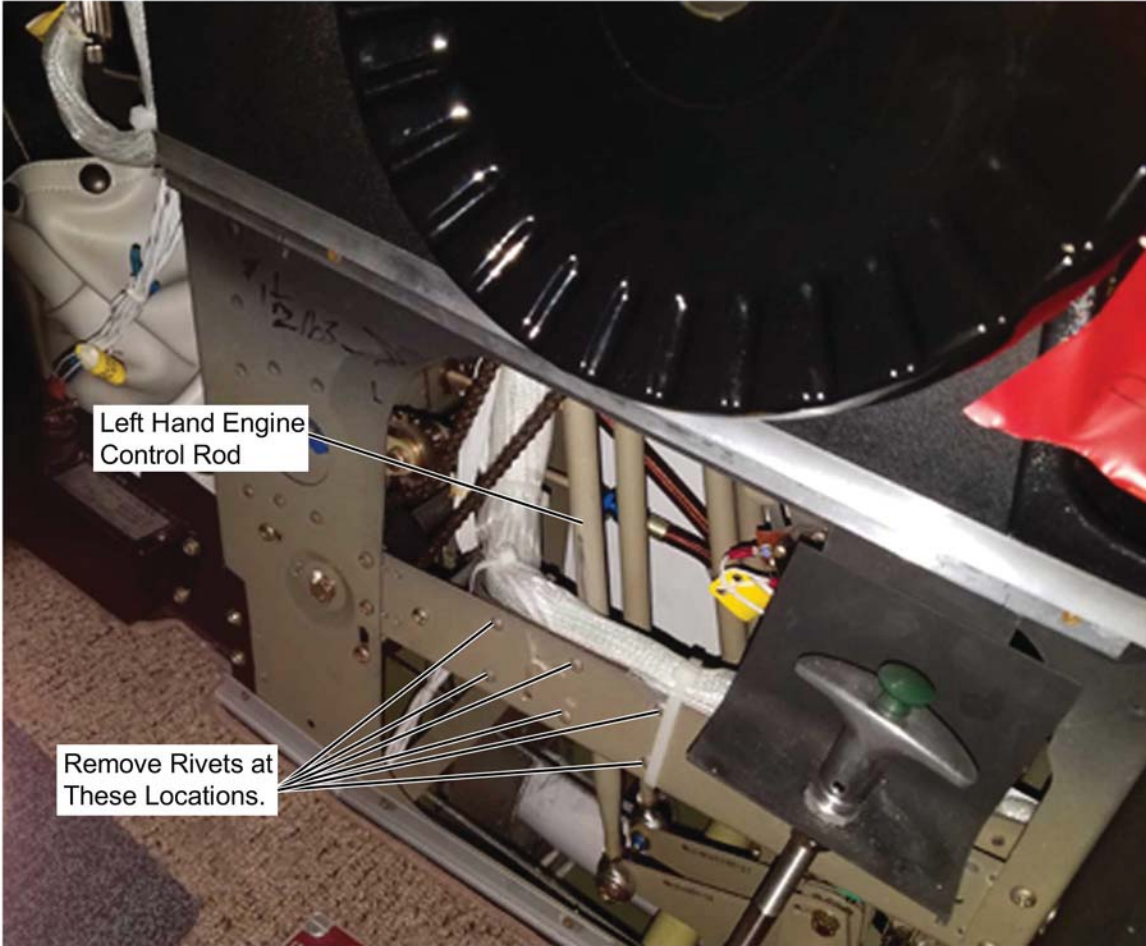


**VIEW D-D**

SOME GEOMETRY OMITTED FOR CLARITY

Figure 1. Pedestal Wiring Inspection / Modification (Sheet 2)

E72153



MTB-24-01

Figure 1. Pedestal Wiring Inspection / Modification (Sheet 3)

**MATERIAL INFORMATION**

Order the kit below to install this modification.

NEW P/N	QUANTITY	KEY WORD	OLD P/N	INSTRUCTIONS/ DISPOSITION
<b>MTB-24-01</b>	1	<b>Kit</b> , consisting of the following parts:		
S4492-13	24 Inches	Sleeve		
MS35206-226	6	Screw		
MS21042L06	6	Nut		
TM2S6	6	Anchor (Tie Mount)		
S2209-5	As Required	Wire Tie		
MTB-24-01	1	Instructions		



**TITLE**

ELECTRICAL POWER - PEDESTAL WIRING INSPECTION / MODIFICATION

**TO:**

King Air and Airliner Aircraft Owner

**REASON**

New anchors in the pedestal provide enhanced clearance for wire harnesses.

**COMPLIANCE**

OPTIONAL. This service document can be accomplished at the discretion of the owner.

**LABOR HOURS**

For planning purposes only:

WORK PHASE	LABOR-HOURS
Modification	As Necessary
Inspection	As Necessary

**MATERIAL AVAILABILITY**

PART NUMBER	AVAILABILITY	COST
MTB-24-01	*	*

\* Please contact Textron Aviation Parts Distribution for current cost and availability of parts listed in this service document. Phone at 1-800-835-4000 (Domestic) or 1-316-517-5603 (International). Send email to: [parts@txtav.com](mailto:parts@txtav.com).

Based on availability and lead times, parts may require advanced scheduling.

**WARRANTY**

None.

**NOTE:** As a convenience, service documents are now available online to all our customers through a simple, free-of-charge registration process. If you would like to sign up, please visit the Customer Access link at [www.txtavsupport.com](http://www.txtavsupport.com) to register.

